



## District 6 Code Analysis - 11/30/2021

Data extracted for Code complaint cases opened between October 1st 2018 - September 30th 2019

### All Complaint Cases

Reported Complaint Type	Total	Commercial	Neighborhood	Multifamily
Land Use	692	49	629	14
Property Abatement	599	37	518	44
Structure Condition	536	190	325	21
Work Without Permit	38	7	30	1
SWS Chp 15	1	-	1	-
<b>Total</b>	<b>1,866</b>	<b>283</b>	<b>1,503</b>	<b>80</b>
<b>Total Percent of Citywide Complaints</b>	<b>5.1%</b>	<b>4.1%</b>	<b>6.7%</b>	<b>1.1%</b>

### Repeat Offender, Short Term Rental, and Rooming and Boarding Home Complaint Cases

\*Filtering complaint cases by complaints occurring at Repeat Offender Properties (ROP), Short Term Rentals (STR), or Rooming and Boarding Homes (RBH). Austin Code categorizes them as Operating Licenses types.

Case Code	Total	Commercial	Neighborhood	Multifamily
Repeat Offender Properties	160	127	30	3
Short Term Rentals	61	-	61	-
Rooming and Boarding Homes	-	-	-	-
<b>Total</b>	<b>221</b>	<b>127</b>	<b>91</b>	<b>3</b>
<b>Total Percent of Citywide Complaints</b>	<b>0.6%</b>	<b>1.8%</b>	<b>0.4%</b>	<b>0.0%</b>

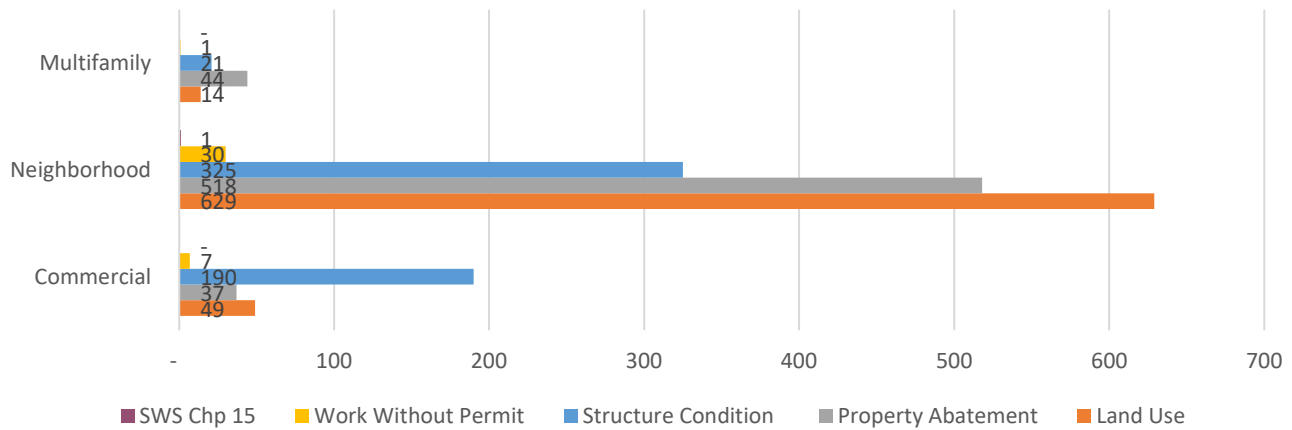
Reported Complaint Type	Total	ROP	STR	RBH
Land Use	692	16	61	-
Property Abatement	599	1	-	-
Structure Condition	536	143	-	-
Work Without Permit	38	-	-	-
SWS Chp 15	1	-	-	-
<b>Total</b>	<b>1,866</b>	<b>160</b>	<b>61</b>	<b>-</b>
<b>Total Percent of Citywide Complaints</b>	<b>5.1%</b>	<b>5.5%</b>	<b>2.2%</b>	<b>0.0%</b>

### Council District Matrix - All Complaint Cases

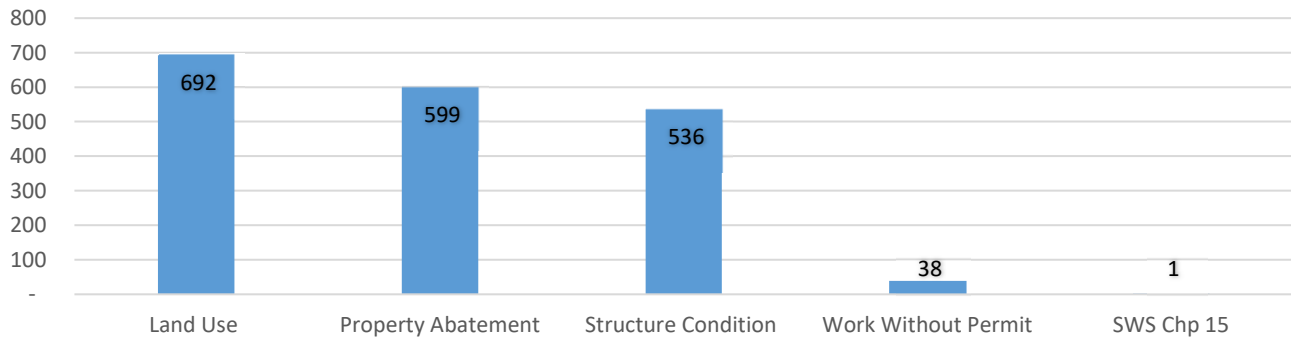
This matrix shows your Council District's percentage of total complaint cases in comparison with others.

Council District	% Total	% Commercial	% Neighborhood	% Multifamily
District 1	16.9%	11.1%	18.5%	17.7%
District 2	8.6%	10.1%	9.4%	4.4%
District 3	13.1%	18.1%	10.6%	16.2%
District 4	13.2%	9.7%	11.1%	23.4%
District 5	8.2%	4.8%	10.4%	4.3%
District 6	5.1%	4.1%	6.7%	1.1%
District 7	8.4%	11.5%	8.4%	5.4%
District 8	4.0%	1.5%	5.8%	0.9%
District 9	15.5%	24.8%	10.6%	22.2%
District 10	7.0%	4.4%	8.6%	4.4%

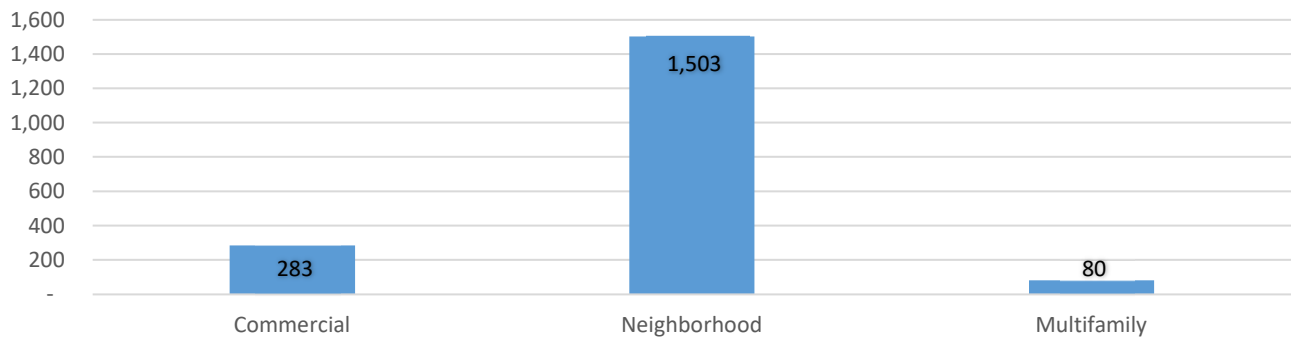
### Complaint Case Types by Zoning Designation



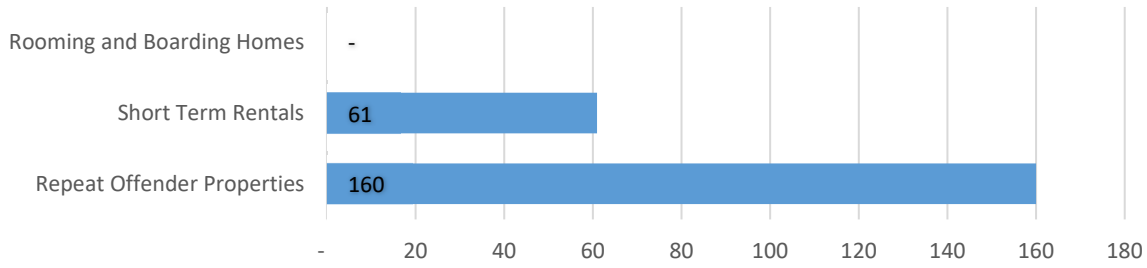
### Complaint Cases by Complaint Type



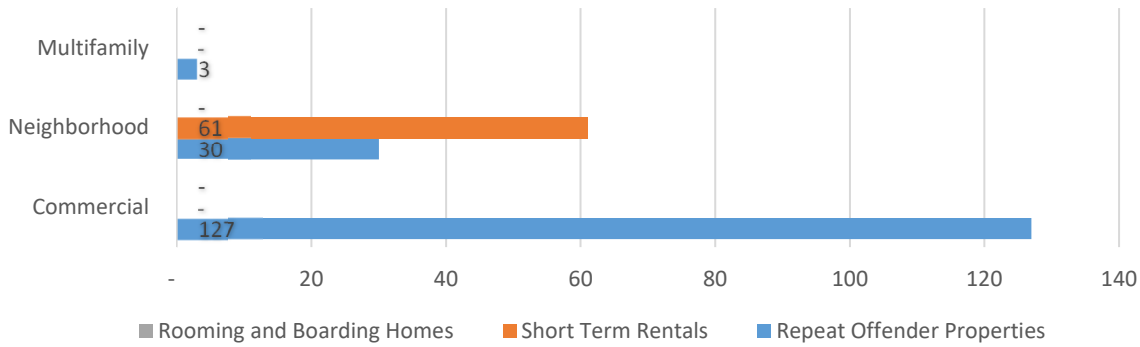
### Complaint Cases by Zoning Designation



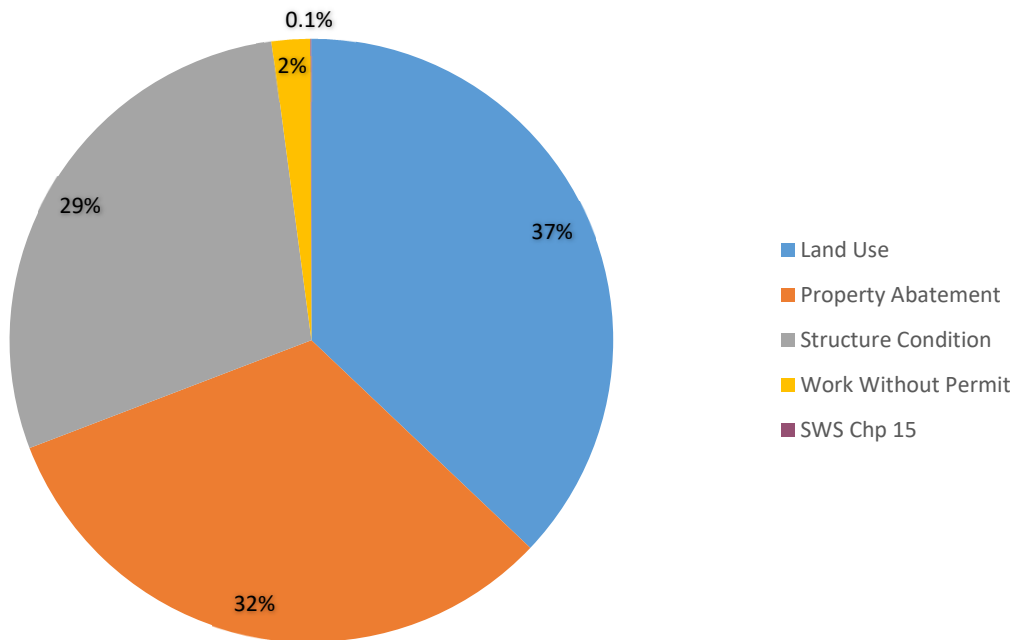
### Complaint Cases by Operating License Types



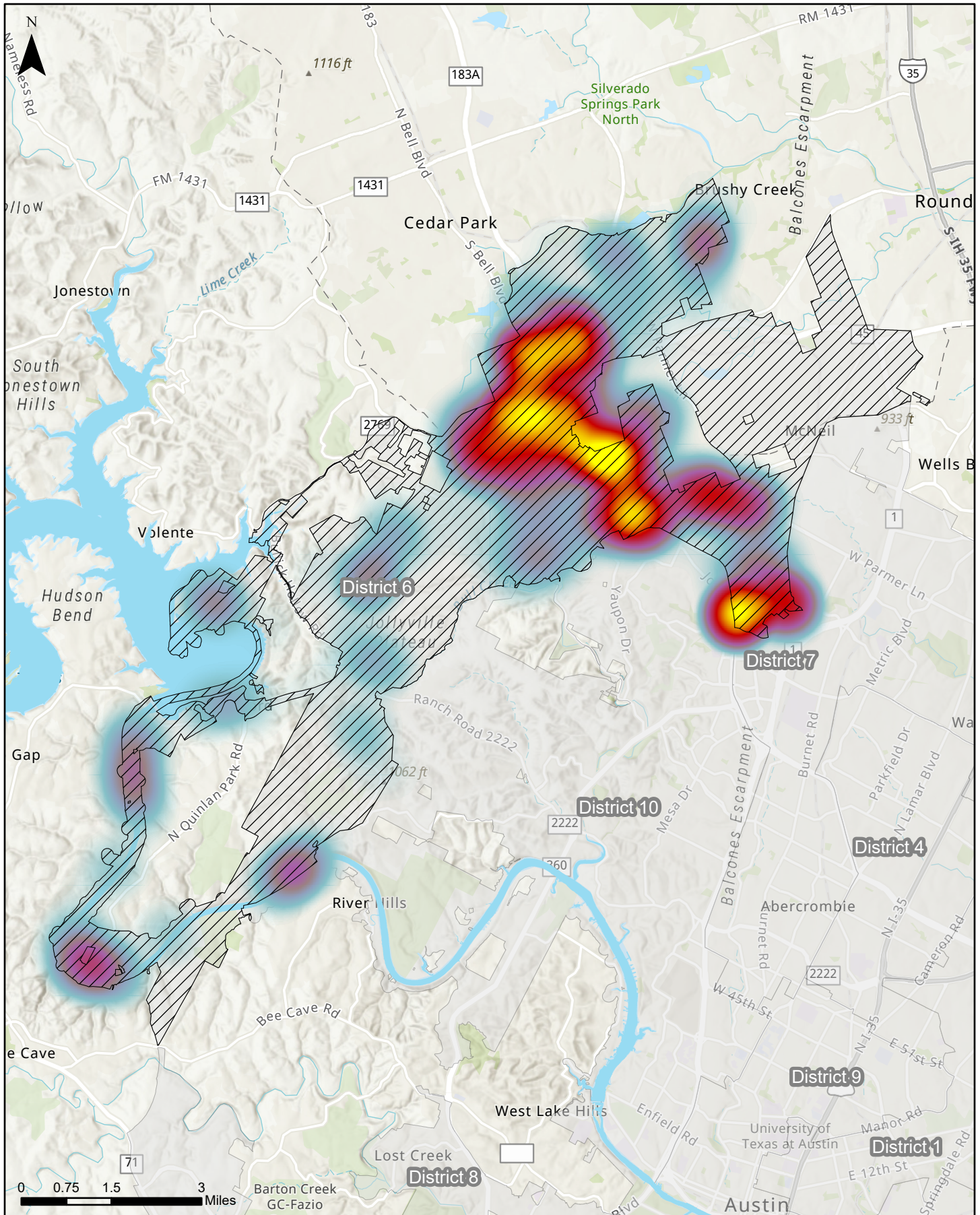
### Operating License Complaint Cases by Zoning Designation



### Operating License Complaint Case Types

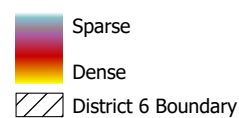


## Council District 6



This map examines the density of code cases opened in District 6 between October 1, 2018 and September 30, 2019. The total number of cases opened was 1,866

Sources: AMANDA Case Management Database; GIS DM 2021



**AUSTIN**CODE  
DEPARTMENT

Map generated on:  
11/12/2021